

Curs 4

- Crearea unui nou stil de scriere: comanda **STYLE**
- Selectarea unui stil de scriere si inscrierea unui text
- Comanda **QTEXT: ON** si comanda **REGEN**
- Comanda **QTEXT: OFF** si comanda **REGEN**
- Tipul de linie si utilizarea lui: comanda **LINETYPE**

- Crearea unui nou stil de scriere: comanda **STYLE**

Command: **STYLE**

Text style name (or ?) <STANDARD>: Times New Roman

New style

Font file <txt>: Times New Roman

Height <0>: 14

Width factor <1.00>: 0.8

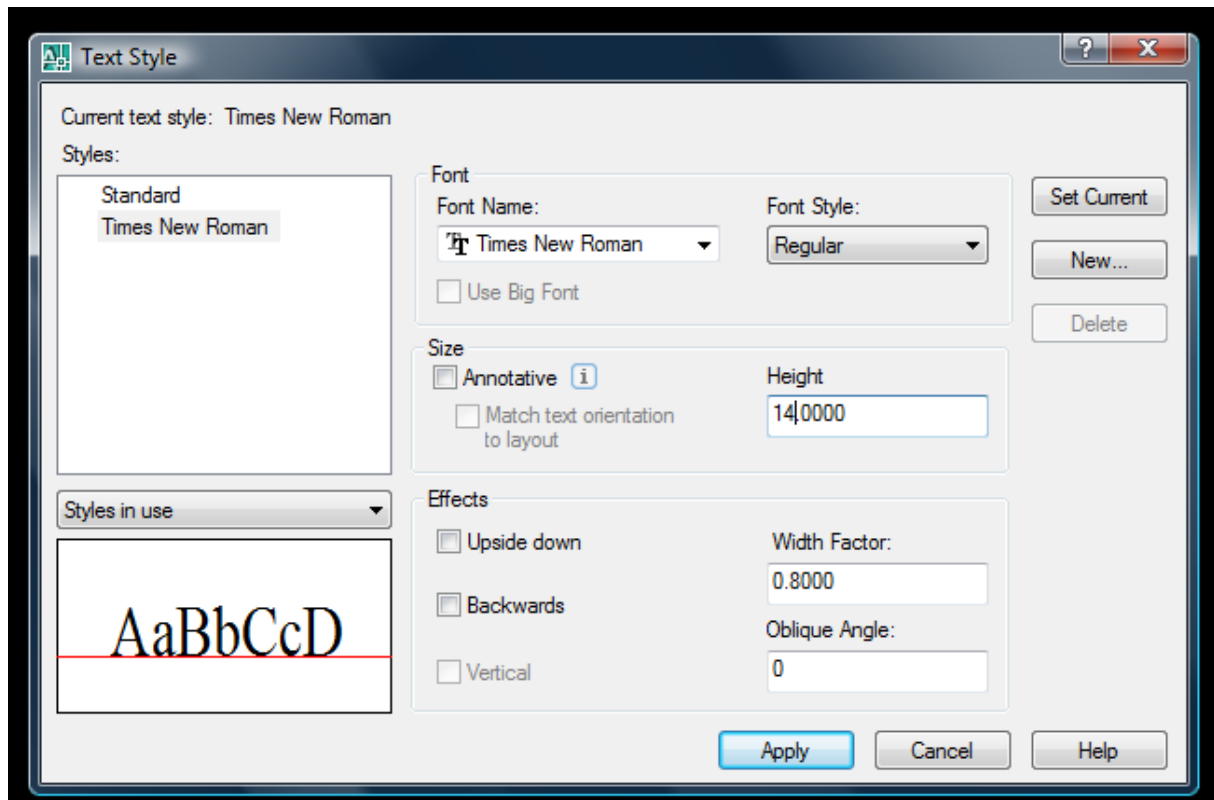
Obliquing angle <0>:↵

Backwards? <N>:↵

Upside-Down ? <N>:↵

Vertical <N>:↵

Times New Roman este acum style-ul curent de scriere



Setarile marcate cu **rosu** se gasesc pe imaginea ecranului, care se deschide dupa comanda STYLE

➤ **Selectarea unui stil de scriere si inscrierea unui text**

✓ **Text aliniat la stanga**

Command: TEXT

Start point or Align/Center?Fit/Middle/Right/Style: S

Style name (or ?) <T20>: RT14

Start point or Align/Center?Fit/Middle/Right/Style: P1 (punct pe desen in care incepe textul)

Rotation angle <0>: ↵

Text: AutoCAD

✓ **Text aliniat intre doua puncte**

Command: TEXT

Start point or Align/Center?Fit/Middle/Right/Style:A

First text line point: P1

Second text line point: P2

Text: AutoCAD

✓ **Text centrat pe linia de baza**

Command: TEXT

Start point or Align/Center?Fit/Middle/Right/Style:C

Center point: P1

Rotation angle <0>: ↵

Text: AutoCAD

✓ **Text incadrat intre doua puncte**

Command: TEXT

Start point or Align/Center?Fit/Middle/Right/Style: F

First text line point: P1

Second text line point: P2

Text: AutoCAD

✓ **Text centrat fata de un punct median**

Command: TEXT

Start point or Align/Center?Fit/Middle/Right/Style: M

Midle point: P1

Rotation angle <0>: ↵

Text: AutoCAD

Text: ↵

✓ **Text aliniat la dreapta**

Command: TEXT

Start point or Align/Center?Fit/Middle/Right/Style: R

End point: P1 (punctul final al textului)

Rotation angle <0>: ↵

Text: AutoCAD

Text: ↵

➤ **Comanda QTEXT: ON si comanda REGEN**

Command: QTEXT

ON/OFF <OFF>: ON

Command: DTEXT

Start point or Align/Center?Fit/Middle/Right/Style: P1 (localizare text)

Rotation angle <0>: ↵

Text: Sectiune ↵

Text Proiectare 2D ↵

Command: REGEN

➤ **Comanda QTEXT: OFF si comanda REGEN**

Command: QTEXT

ON/OFF <OFF>: OFF

Command: DTEXT

Start point or Align/Center?Fit/Middle/Right/Style: P1 (localizare text)

Rotation angle <0>: ↵

Text: Sectiune ↵

Text Proiectare 2D ↵

Command: REGEN

QTEXT: ON

Inainte de REGEN (regenerare)

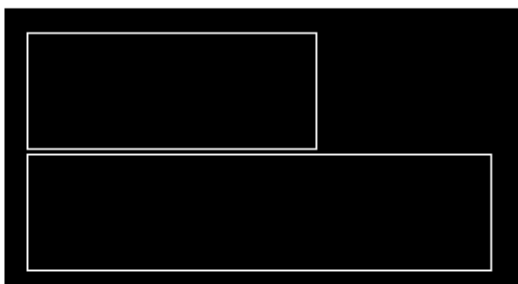


Dupa REGEN



QTEXT: OFF

Inainte de REGEN (regenerare)



Dupa REGEN



- **Tipul de linie si utilizarea lui: comanda LINETYPE**
- ✓ **Incarcarea celor mai utilizate tipuri de linii**

Command: LINETYPE

?/Create/Load/Set: L

Linetype(s) to load: *

File to search (acad): ↵

Linetype DASHED loaded

Linetype HIDDEN loaded

Linetype HIDDEN loaded

Linetype CENTER loaded

Linetype PHANTOM loaded

Linetype DOT loaded

Linetype DASHDOT loaded

Linetype BORDER loaded

Linetype DIVIDE loaded

?/Create/Load/Set: ↵

✓ **Utilizarea tipului CONTINUOUS**

Command: LINETYPE

?/Create/Load/Set: S

New entity linetype (or?) <DASHDOT>: CONTINUOUS

?/Create/Load/Set: ↵

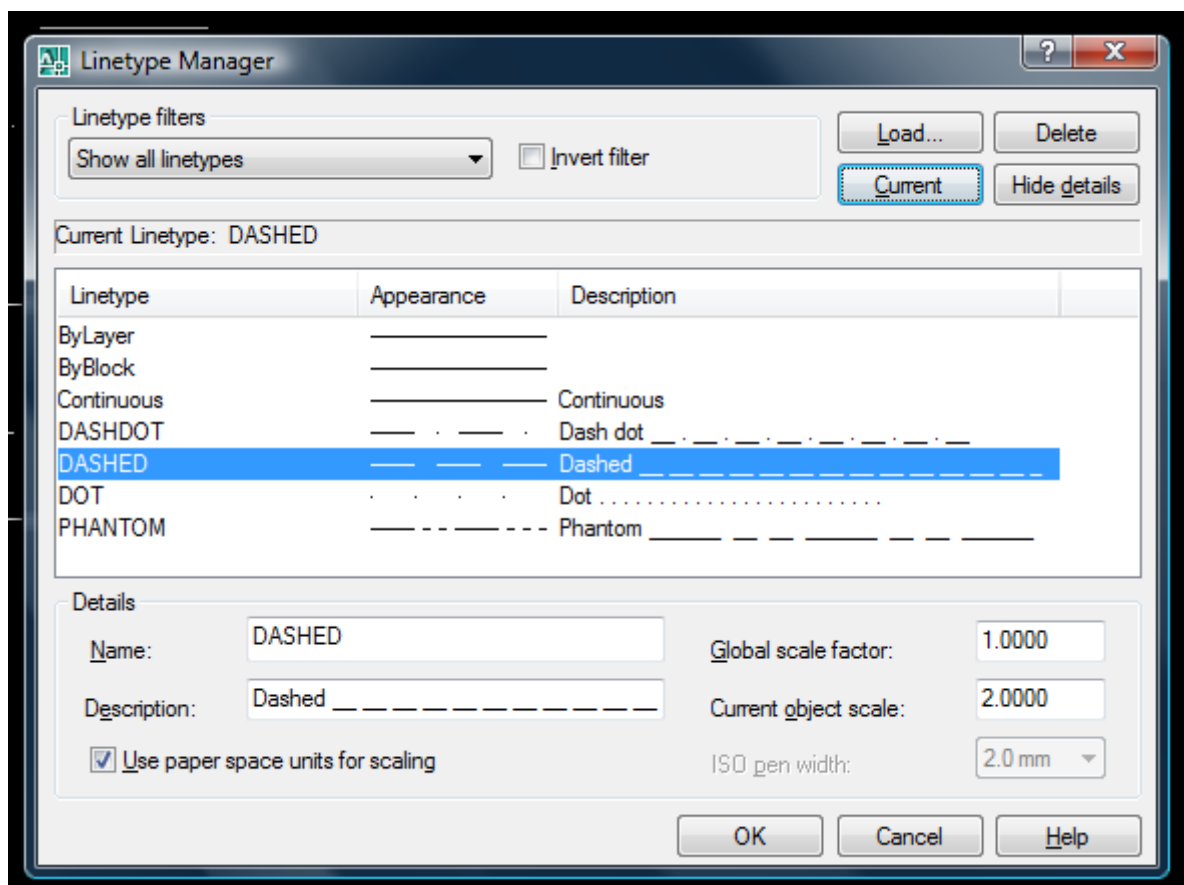
✓ **Utilizarea tipului DASHDOT**

Command: LINETYPE

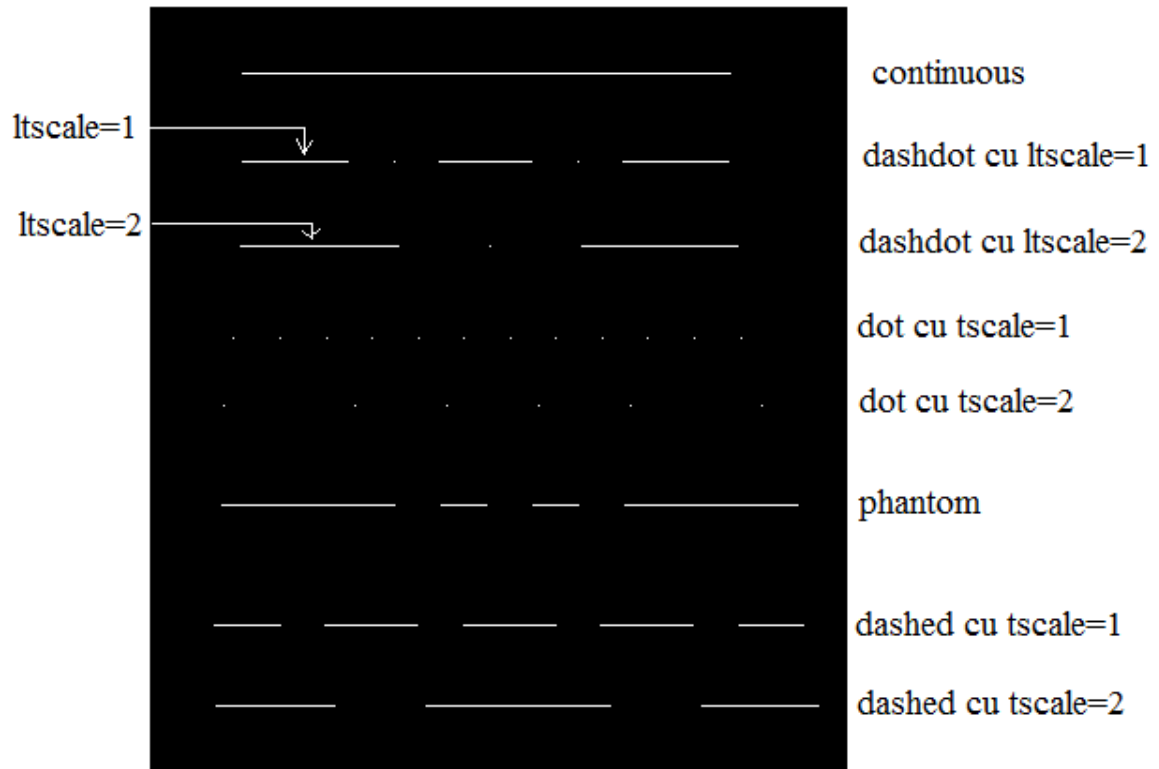
?/Create/Load/Set: S

New entity linetype (or?) <CONTINUOUS>: DASHDOT

?/Create/Load/Set: ↵



Setari LINETYPE; selectarea liniei curente DASHDOT

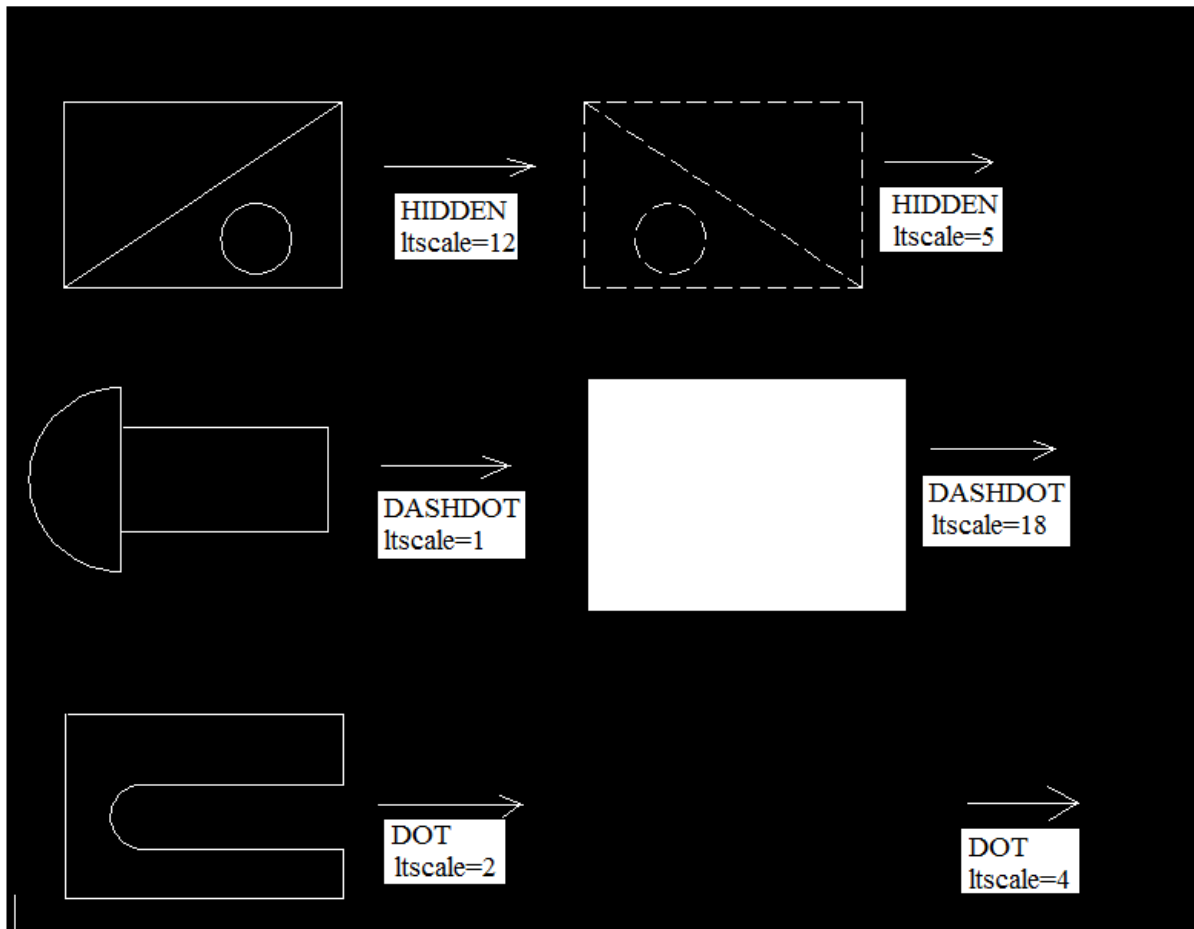


Tipuri de linie

➤ **Exercitii**

✓ **Exercitui I**

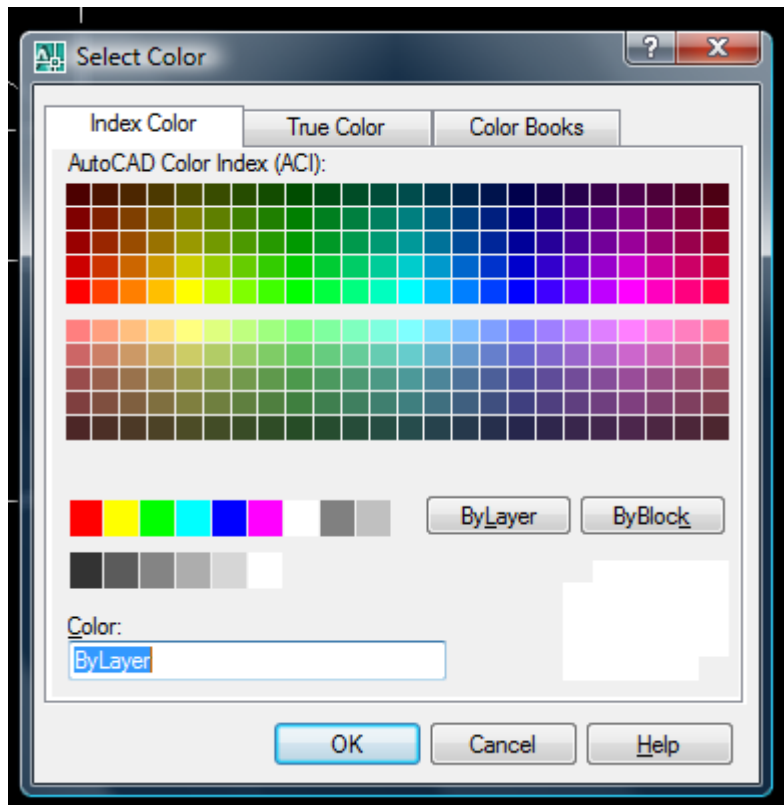
Sa se refaca urmatoarele desene modificand tipul de linie si factorul de scala:



✓ **Exercitiul II**

Sa se deseneze CURCUBEUL: un set de arce de cerc, cu unghi la centru de 180° , iar razele in ordine crescatoare pentru succesiunea de culori ROGVAIV.

Se va utiliza comanda: COLOR si se vor selecta culorile din ecranul *Select color*.



Codul culorilor utilizate in AutoCAD